

ANASAZI

STONE COMPANY, INC.



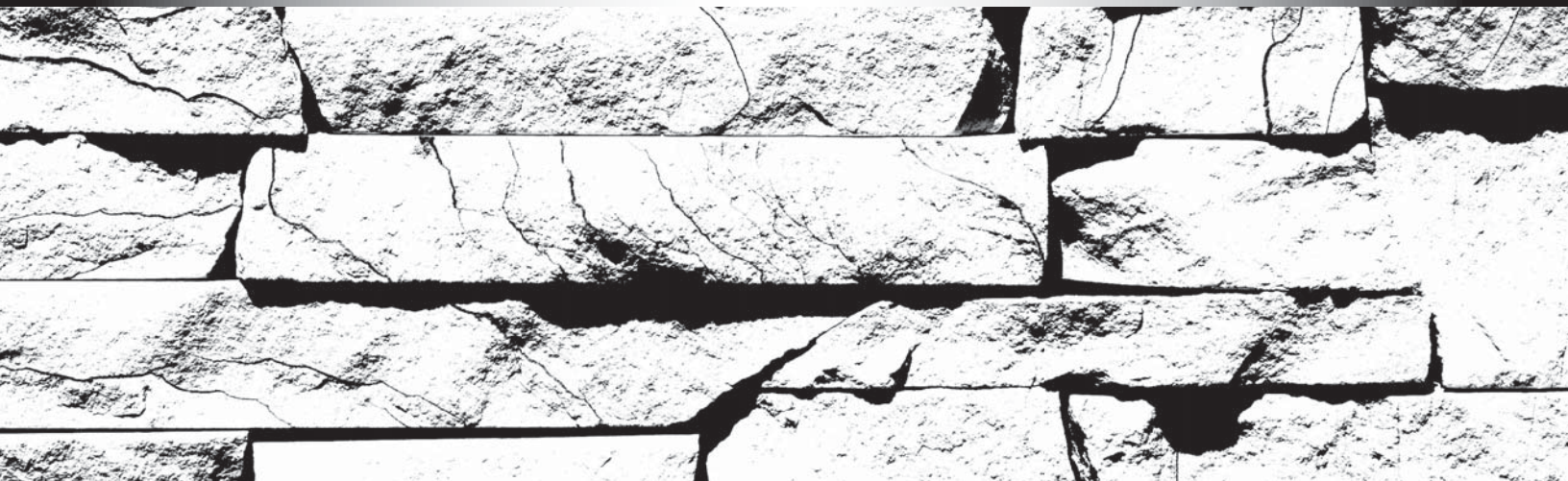
REAL STONE THIN VENEER - 2011



NOW THE PERMANENT BEAUTY
OF AUTHENTIC NATURAL STONE
IS AVAILABLE AS A THIN VENEER.

There is nothing more durable, more
natural, more breathtaking than stone
produced by Mother Nature.

For over 20 years Anasazi Stone has
built a reputation by offering and
discovering new and unique stone from
quarries locally and around the world,
all available now in thin veneer.





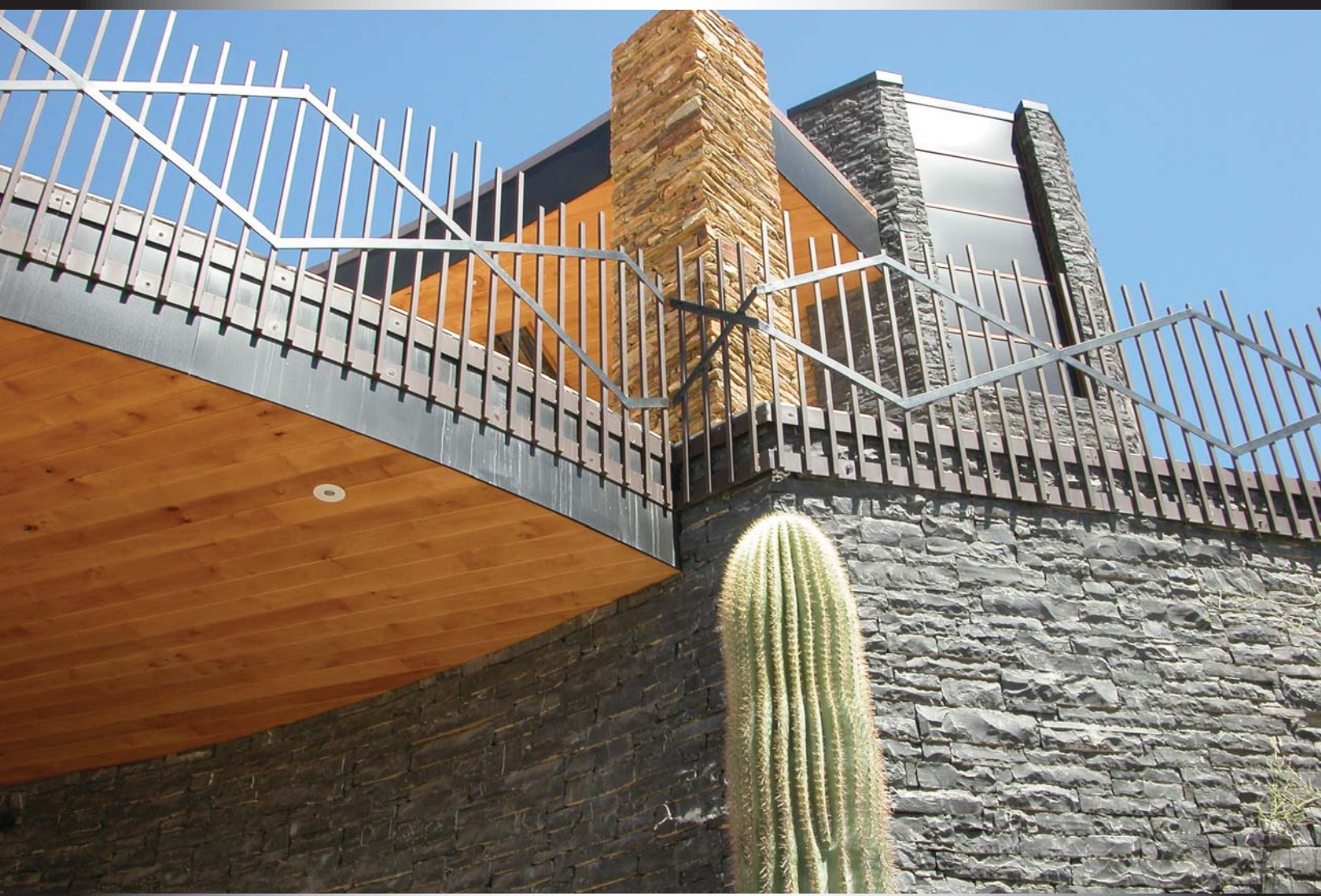
Our name, Anasazi, is derived from the Anasazi Indians who were the first architects and builders using Coconino sandstone. Though they reached the height of their civilization between 1100 and 1300 AD many of their buildings still stand as a testament to Anasazi engineering and the stone's durability.

At Anasazi Stone, we own and operate quarries in the U.S. and Mexico and have an extensive network of suppliers nationwide and abroad. Over the years we have, and continue to, produce everything from 100,000 square ft. of honed wall cladding for a 5 story office building to the smallest do-it-yourself homeowner project. Nothing is too large or too small, and the same attention to detail is given to each order.

Whether you are looking for something specific or just want to know what options are available, contact us directly and we will be happy to assist you.



LEDGESTONE





3 RIVERS LEDGESTONE



ARIZONA BROWN SCHIST



AUTUMN FLAME



AUTUMN HORIZON



BIGHORN



BLACK GOLD



BLACK OPAL SCHIST



BLACK PEARL



BLUE LEDGE



CANADIAN MULTI-BLEND



CANYON CREEK



CAROLINA LEDGESTONE



GLACIER MOUNTAIN



GOLD QUARTZITE



GOLDEN BROWN SCHIST



GOLDEN RAY



GRANITE



HICKORY



HONEY QUARTZITE



IRONWOOD



LOST CREEK



MOSS ROCK



MT. MORIAH



OCEAN MIST



PLUM LEDGESTONE



RUSTIC RANCH BLUE



RUSTIC RANCH LEDGESTONE



CHINA MULTI





SALMON QUARTZITE



SANTA CRUZ



SANTA ROSA



SEDONA BROWN SCHIST



SHIRAZ



SIERRA MADRE



SILVER QUARTZITE



SONOMA ARCHAIC



SONORAN BLACK



SONORAN BROWN



SUNSET BRONZE



WILD HORSE SWIRL



COBBLE-TUMBLED STONE





ANTIQUÉ COBBLE



ARKANSAS CREEK COBBLE



AUTUMN BLEND TUMBLED



BLUE COBBLE



BRADSHAW RUBBLE



COUNTRY COBBLE GREY



RUSTIC RANCH TUMBLED



DC RANCH COBBLE



THIN COBBLE



TUMBLED GOLDEN CANADIAN

ASHLAR





AUSTIN CREAM



AUSTIN WHITE LIMESTONE



BALLINGER



CAMERON



CANYON CASTLE



COUNTRY COTTAGE



CRANFORD BLEND



FOSSIL CREEK





GRAY LUEDERS



HUALAPAI CHOCOLATE



LUEDERS ANTIQUE LIMESTONE



LUEDERS MIX



PACIFIC ASHLAR



RICO STACK



SIERRA



SALADO BLEND



SONOMA CAVE



TAYLOR BROWN



TERRA UMBRA



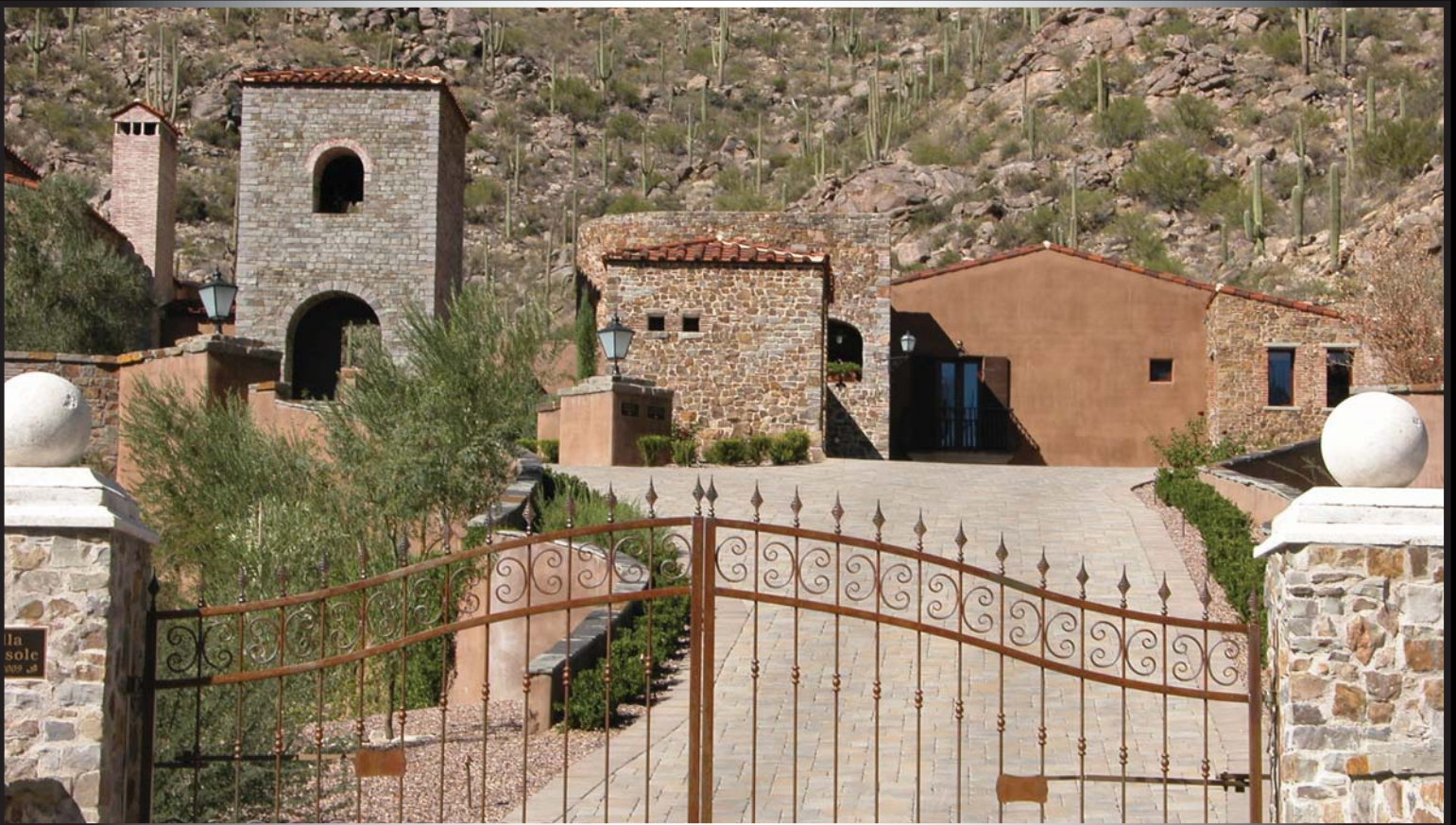
TUSCANY BROWN



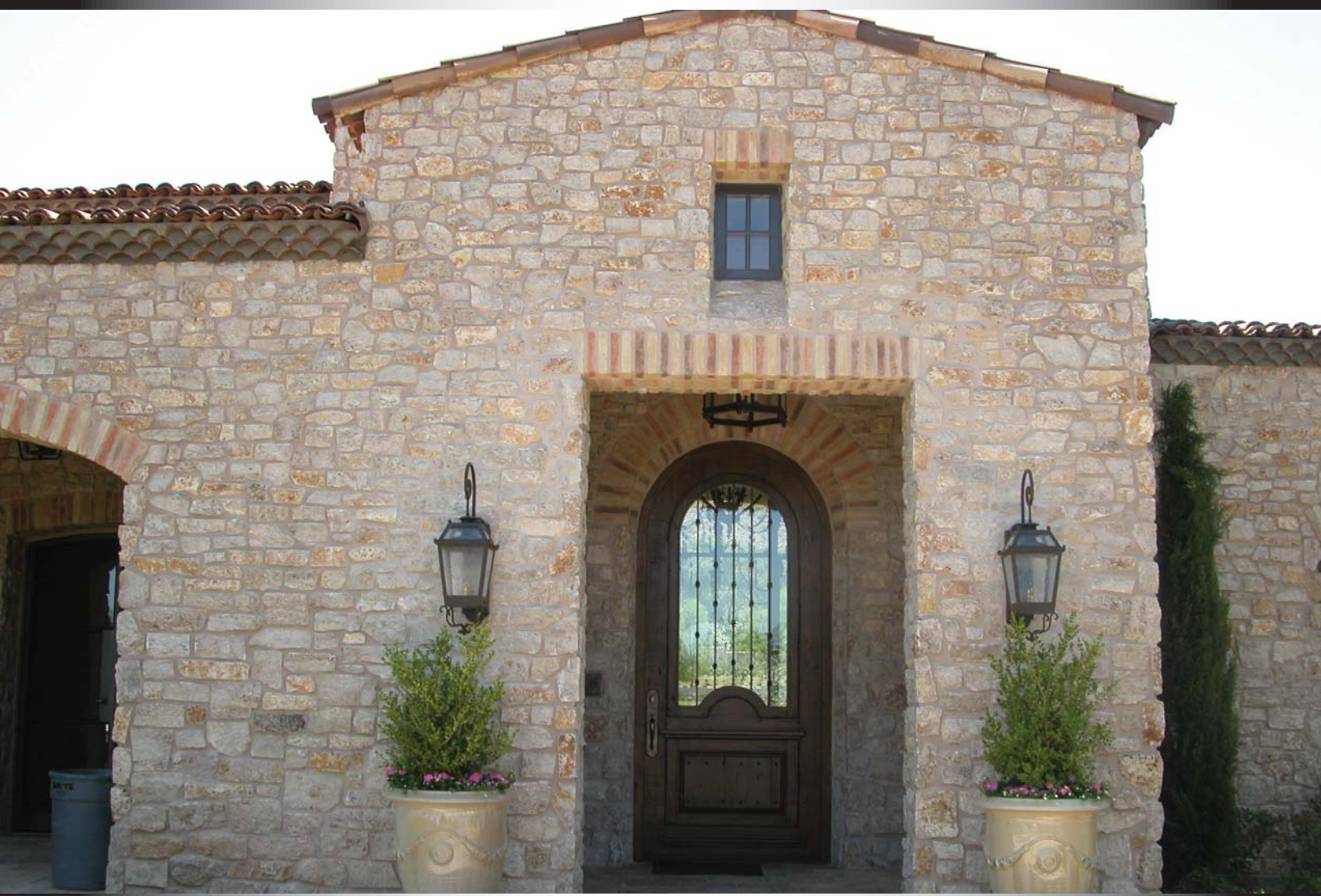
TUSCANY GOLD



WHITE MOUNTAIN GOLD



FIELDSTONE





ARBUTUS



BAJA CRESTA



BAJA DRIFT



BEAVER MOUNTAIN



CANYON CASTLE



CANYON CREEK



CONGRESS



COPPER CREEK BLEND



DRY CREEK BLEND



FARMERS



GAITHER RIPPLE



HARBOR MIST



HIGH DESERT BLEND



HIGHLAND



HONEYCOMB



KANSAS RUBBLE



KETTLE VALLEY GRANITE



LOON LAKE



MONTANA MOSS ROCK



MOUNTAIN BOOMER



NITTANY MOUNTAIN



OSAGE RUBBLE



RANCHO



RUSTIC RANCH RUBBLE



TACINA



UPPER CANYON BLEND



ANASAZI

STONE COMPANY, INC.
Contributes to Green Building Design

U.S. Green Building Council (USGBC), is a non-profit coalition of Leaders from across the building industry dedicated to promoting environmentally responsible, profitable and healthy places to live and work.

USGBC developed LEED® (Leadership in Energy and Environmental Design) to establish a common standard of measurement and promote integrated, whole-building design practices.

LEED® is a voluntary, consensus-based national standard for developing high-performance, sustainable commercial and residential buildings. The rating system awards points for performance in green design categories including: sustainable sites; water efficiency; energy and atmosphere; materials and resources; indoor environmental quality; and innovation and design processes.

No single product can achieve LEED® points. However, using Anasazi Stone's Green Thin Veneers in your commercial or residential building design can help contribute toward LEED® credits.

BUILD IT GREEN WITH ANASAZI STONE

We're committed to providing innovative materials that help builders and architects produce sustainable "Green" buildings that cost less to operate, are easier to maintain and provide better comfort year round.



LEED-NC, for New Construction projects, is the most widely used green building rating system in the United States.

LEED-NC emphasizes 6 categories for environmental improvements: (Natural Stone Products can contribute to points in several of these categories)

1. Sustainable Sites (SS)
2. Water Efficiency (WE)
3. Energy & Atmosphere (EA)
4. Materials & Resources (MR)
5. Indoor Environmental Quality (IEQ)
6. Innovation & Design (ID)

SS Credit 7.1: Heat Island Effect, Non Roof: Using light colored natural stone with a solar reflective index of 29 or greater can reduce heat-island effects. For instance, the use of light colored stone as caps on such features as landscaping walls, stair treads and pavement may generate a credit.

EA Credit 1: Optimize Energy Performance: Natural stone has good thermal mass (the ability of a material to store heat and slowly release it), which positively impacts indoor ambient air temperature, and thus, energy efficiency.

MR Credits 2.1 & 2.2 Construction Waste Management, Divert 50-75% from Disposal: “Waste” stone used in construction is diverted to a beneficial use rather than being disposed.

MR Credits 5.1 & 5.2 Regional Materials, 10-20%, Extracted, Processed and Manufactured: Project uses natural stone that has been extracted, harvested or recovered, as well as manufactured, within 500 miles of the project site (see map for areas), for a minimum of 10% (based on cost) of the total materials value.

ID Credit 1: Use of natural stone may contribute to exceptional performance in areas such as life-cycle cost and durability, mold resistance and improved air quality.

LEED AND RELATED LOGO IS A TRADEMARK OWNED BY THE U.S. GREEN BUILDING COUNCIL AND IS USED BY PERMISSION.

U.S. GREEN
BUILDING CERTIFIED



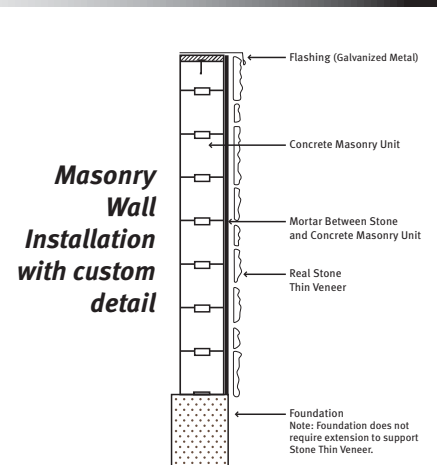
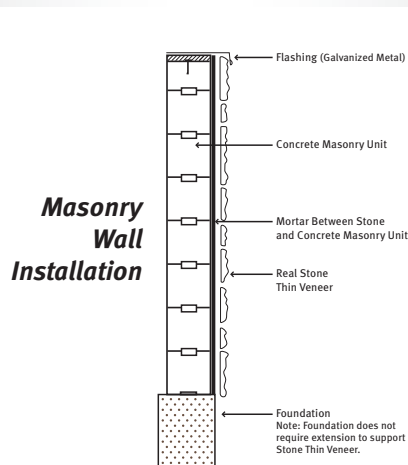
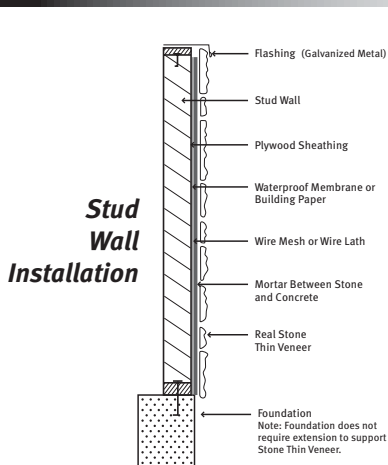
STONES SOURCED WITHIN THIS 500 MILE AREA FALL UNDER CATEGORY MR 5.1 & 5.2 AND ARE MARKED THROUGHOUT THE CATALOG WITH A GREEN LEAF



OUR THIN VENEER REAL STONE PRODUCTS ARE DESIGNED FOR NON-STRUCTURAL USE — THEY'RE LIGHTWEIGHT, EASY TO INSTALL AND CAN BE APPLIED OVER MASONRY AND WOOD SURFACES.

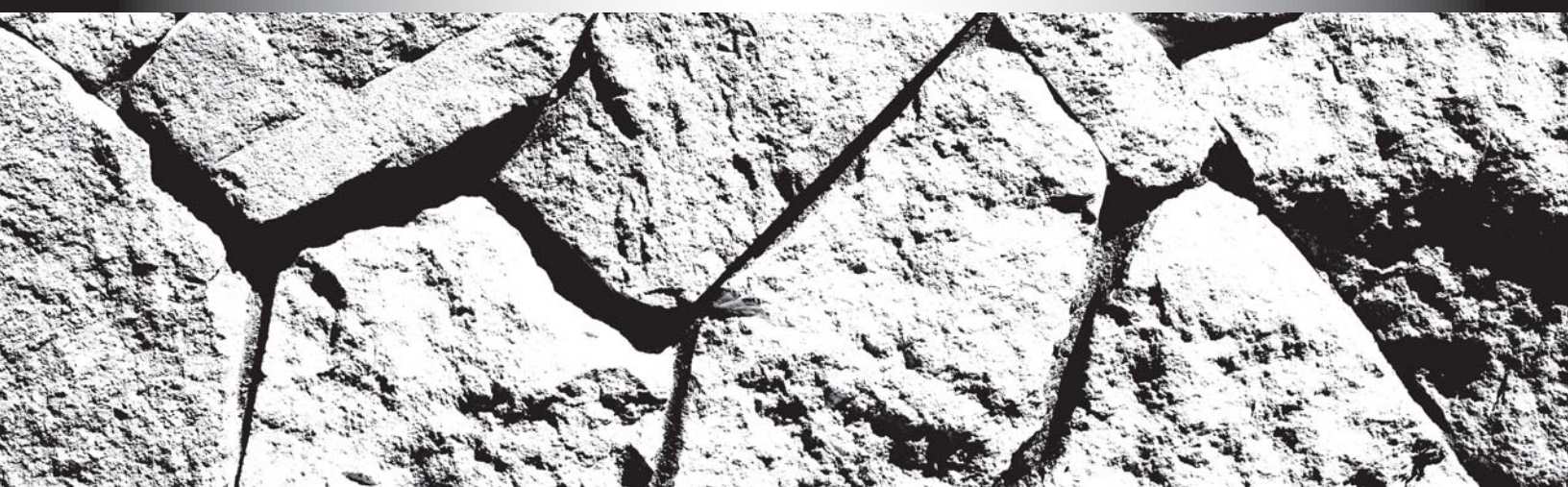
TYPICAL INSTALLATION PROCESS:

- Surface is cleaned and prepared by removing paint and applying metal lath. If veneer is on an exterior surface, a vapor barrier is installed prior to applying metal lath.
- Using a notched trowel, a thin scratch coat of mortar is applied to wall and allowed to cure completely.
- Thin veneer stone pieces are cleaned of dust and excess debris then trimmed and arranged to desired pattern prior to final installation to ensure proper fit.
- A 1/2" thick layer of mortar is applied to wall, then the entire back side of each piece is covered with a thin, even coat of mortar and pressed firmly into place allowing mortar to ooze out along edges of stone, ensuring complete adhesion.
- Excess mortar is removed from edges and surface of stone pieces before it sets.
- If desired, joints are filled with grout to desired depth.



NOTES:

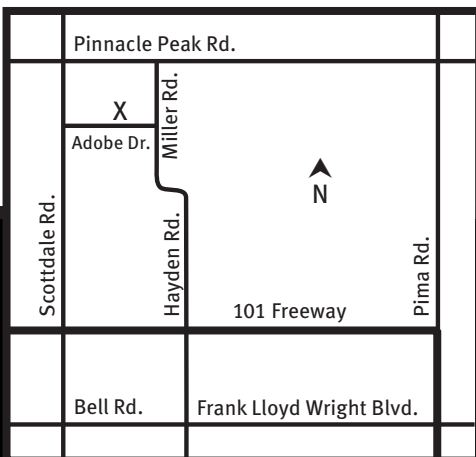
A large white rectangular area containing 20 horizontal dotted lines for writing notes.



ANASAZI

STONE COMPANY, INC.

PROUD MEMBERS OF NATURAL STONE® COUNCIL

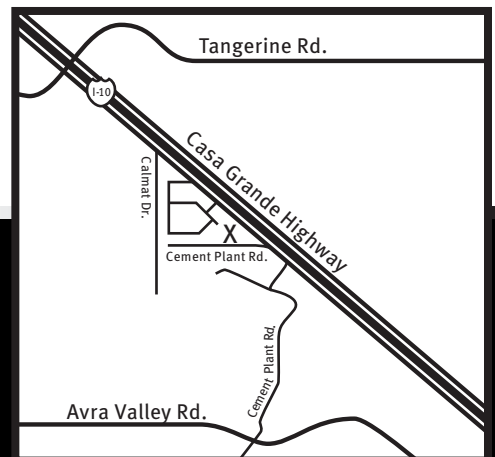


SCOTTSDALE LOCATION

7486 E. ADOBE DRIVE
SCOTTSDALE, AZ 85255
P: 480-585-9882
F: 480-585-9884

TUCSON LOCATION

11421 N. CASA GRANDE HWY
MARANA, AZ 85654
P: 520-624-0505
F: 520-682-4426



WWW.ANAZASISTONE.COM

Due to photo reproduction, colors shown in this brochure may vary from actual product. Never use acids on stone.